

RESOLUTION 16-48

A RESOLUTION OF THE CITY OF PANAMA CITY BEACH, FLORIDA, APPROVING THE AGREEMENT WITH GAC CONTRACTORS, INC RELATED TO THE CITY'S CONSTRUCTION OF THE THREE SHADE STRUCTURES AND A POLE BARN AT FRANK BROWN PARK IN AN AMOUNT OF \$46,992; AND PROVIDING AN IMMEDIATELY EFFECTIVE DATE.

BE IT RESOLVED that the appropriate officers of the City are authorized but not required to accept and deliver on behalf of the City that certain Agreement between the City and GAC Contractors, Inc., relating to the construction of the three shade structures and a pole barn at Frank Brown Park, in the basic amount of Forty Six Thousand Nine Hundred Ninety Two Dollars (\$46,992), in substantially the form attached and presented to the Council today, draft dated January 20, 2016, with such changes, insertions or omissions as may be approved by the City Manager and whose execution shall be conclusive evidence of such approval.

THIS RESOLUTION shall be effective immediately upon passage.

PASSED in regular session this 28th day of January, 2016.

CITY OF PANAMA CITY BEACH

By: 
Gayle F. Oberst, Mayor

ATTEST:


Diane Fowler, City Clerk

Bid Specifications



Date: 1/22/2016
To: Mario Gisbert
From: Jim Ponek, Parks and Recreation Director
Subject: Shade Structures

The Parks and Recreation Department received three bids for the "Shade Structure" project. Three bids were received. The lowest bid was deemed non-responsive for failure to include required drawings.

The Parks and Recreation staff recommends that the Council authorize the City to contract with the lowest fully responsive and responsible bidder, GAC, for \$46,992.00 for the "Shade Structure" Project.

**CITY OF PANAMA CITY BEACH
 BID TABULATION**

Bidder	Address	Information	Price
GAC	4116 Highway 231 N Panama City, FL 32404 850-785-4675	No terms/deposit	\$46,992.00
PECS	PO Box 811 Chipley, FL 32428 850-258-5619	No terms/deposit	\$45,124.25
JA Dawson	PO Box 1178 Pelham, AL 35124 205-663-5058	No terms/deposit	\$82,380.00

BID PROPOSAL FORM

TO: City of Panama City Beach, Florida

SUBMITTED: January 20, 2016.

Frank Brown Park Shade Structures

The Undersigned, as Bidder, hereby declares that they have examined the bid specifications and informed themselves fully in regard to all conditions pertaining to the equipment to be supplied.

The Bidder proposes and agrees, if this proposal is accepted, to contract with the **City of Panama City Beach** for the lump sum prices listed, in full and complete accordance with the shown, noted, described and reasonably intended requirements of the specifications to the full and entire satisfaction of the City of Panama City Beach, Florida, with a definite understanding that no additional money will be allowed for extra work. Payment in full will be made to the supplier within 30 days of delivery. The Bidder further proposes and agrees hereby to build all shade shelters within 6 consecutive weeks from when bid is approved and awarded.

Purchase will be made under terms and conditions specified by City in its form of Purchase Order. If a deposit is required, it must be specified below. Final payment, in readily available funds, will be made upon acceptance by City of strictly conforming goods after delivery. Strict adherence to design specifications is required.

ADDENDUM ACKNOWLEDGMENT: (Only if addendums have been provided).

I, the undersigned bidder, hereby acknowledge receipt of the following addenda:
Addendum No. N/A Addendum No. _____

DRAWINGS:

A drawing of all four (4) Shade Shelters must be attached to this bid proposal form.

LUMP SUM BID PRICE:

Lump sum price for furnishing three (3) Shade Shelters and one (1) Pole Barn in accordance with the contract Specifications:

\$ 46,992.00 * IF BOTH JOBS ARE AWARDED TO GAC DEDUCT \$4560.

Specify Manufacturer and Model # of roofing material and lumber being used:

See attached documnetation


Specify terms of any deposit: _____

SUPPLIER: GAC Contractors Inc

BY: Matthew Morgan TITLE: Project Manager

ADDRESS: 4116 Highway 231 North City Panama City State FL Zip 32404

EMAIL ADDRESS: mmorgan@gaccontractors.com Phone 850-785-4675

SIGNATURE -- (Confirming all information above is correct) 

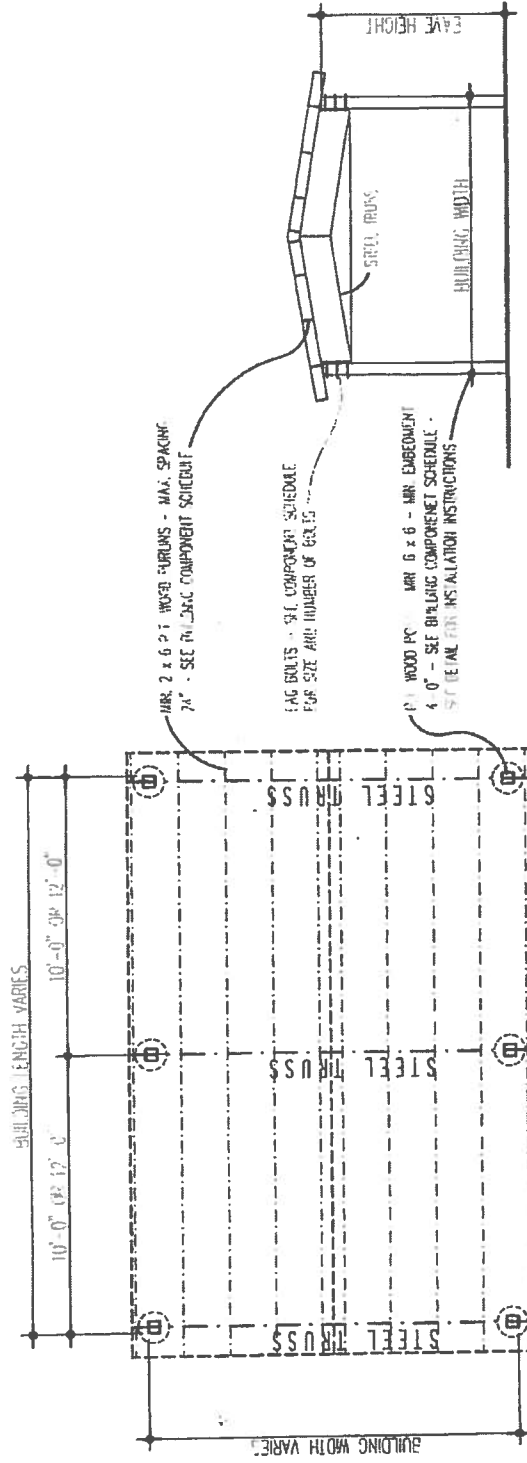
6x6 - PT LUMBER

#2 SYP - PURLINS

BUILDING COMPONENT SCHEDULE - MAX. EAVE HEIGHT 10'													
12' WIDE BUILDING - MAX. BAY SIZE 12' - MAX. EAVE HEIGHT 10' - MAXIMUM WIND LOAD 130 MPH 3 SECOND GUST					30' WIDE BUILDING - MAX. BAY SIZE 12' - MAX. EAVE HEIGHT 10' - MAXIMUM WIND LOAD 130 MPH 3 SECOND GUST								
FOOTING MARK	POLES	LAG BOLTS EACH END OF EACH TRUSS TO POST	PURLINS WITH 6 - #2 x 15" SCREWS AT EACH BOCKET	ROOFING	ROOFING FASTENERS	CABLE BRACING REQUIRED	FOOTING MARK	POLES	LAG BOLTS EACH END OF EACH TRUSS TO POST	PURLINS WITH 6 - #2 x 15" SCREWS AT EACH BOCKET	ROOFING	ROOFING FASTENERS	CABLE BRACING REQUIRED
F11	6 x 6	3 - 1/2" x 5"	2 x 6's @ 24" O.C. MAXIMUM	29 GA. METAL	SFS #141.5 @ 12" O.C.	7	F16	8 x 8	4 - 1/2" x 7"	2 x 6's @ 24" O.C. MAXIMUM	29 GA. METAL	SFS #141.5 @ 12" O.C.	7
16' WIDE BUILDING - MAX. BAY SIZE 12' - MAX. EAVE HEIGHT 10' - MAXIMUM WIND LOAD 130 MPH 3 SECOND GUST													
F14	6 x 6	3 - 1/2" x 5"	2 x 6's @ 24" O.C. MAXIMUM	29 GA. METAL	SFS #141.5 @ 12" O.C.	7	F16	8 x 8	4 - 1/2" x 7"	2 x 6's @ 24" O.C. MAXIMUM	29 GA. METAL	SFS #141.5 @ 12" O.C.	7
20' WIDE BUILDING - MAX. BAY SIZE 12' - MAX. EAVE HEIGHT 10' - MAXIMUM WIND LOAD 130 MPH 3 SECOND GUST													
F14	6 x 6	3 - 1/2" x 5"	2 x 6's @ 24" O.C. MAXIMUM	29 GA. METAL	SFS #141.5 @ 12" O.C.	7	F16	10 x 10	4 - 1/2" x 7"	2 x 6's @ 24" O.C. MAXIMUM	29 GA. METAL	SFS #141.5 @ 12" O.C.	7
24' WIDE BUILDING - MAX. BAY SIZE 12' - MAX. EAVE HEIGHT 10' - MAXIMUM WIND LOAD 130 MPH 3 SECOND GUST													
F16	6 x 6	4 - 1/2" x 5"	2 x 6's @ 24" O.C. MAXIMUM	29 GA. METAL	SFS #141.5 @ 12" O.C.	7	F16	10 x 10	4 - 1/2" x 7"	2 x 6's @ 24" O.C. MAXIMUM	29 GA. METAL	SFS #141.5 @ 12" O.C.	7

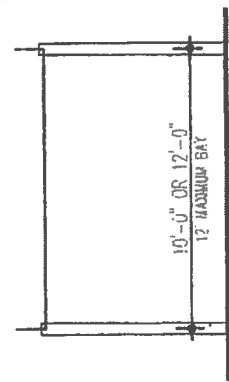


PLANS AND ELEVATIONS



- 1" - 2 x 6 PT WOOD FURMS - MAX. SPACING 24" - SEE BUILDING COMPONENT SCHEDULE
- 2" - 4 x 4 - SEE BUILDING COMPONENT SCHEDULE FOR SIZE AND NUMBER OF BOLTS
- 3" - WOOD PC - MIN 6 x 6 - MIN EMBEDMENT 4'-0" - SEE BUILDING COMPONENT SCHEDULE - SEE DETAIL FOR INSTALLATION INSTRUCTIONS

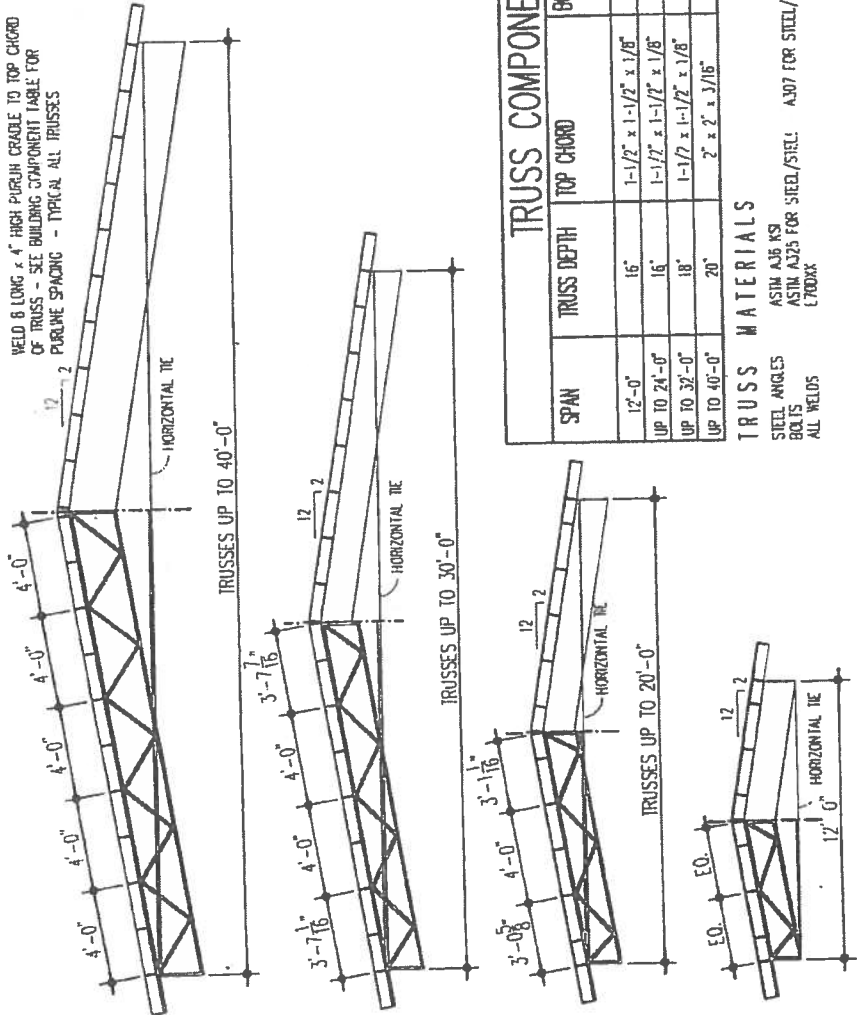
END ELEVATION



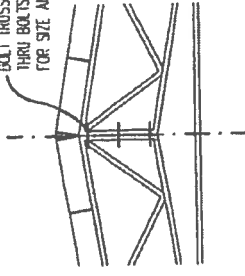
SIDE ELEVATION

T R U S S D E S I G N / D E T A I L S

WELD 8 LONG x 4" HIGH PURCH CRAGLE TO TOP CHORD OF TRUSS - SEE BUILDING COMPONENT TABLE FOR PURCHLINE SPACING - TYPICAL ALL TRUSSES



BOLT TRUSSES TOGETHER WITH EQUALLY SPACED THRU BOLTS - SEE TRUSS COMPONENT TABLE FOR SIZE AND NUMBER OF BOLTS



TRUSS MATING DETAIL

TRUSS COMPONENT DESIGN SCHEDULE					
SPAN	TRUSS DEPTH	TOP CHORD	BOTTOM CHORD/HORIZONTAL TIE	WEB MEMBERS	THRU BOLTS @ TRUSS MIDLINE
12'-0"	16"	1-1/2" x 1-1/2" x 1/8"	1-1/2" x 1-1/2" x 1/8"	1-1/2" x 1-1/2" x 1/8"	3 - 3/4"
UP TO 24'-0"	16"	1-1/2" x 1-1/2" x 1/8"	1-1/2" x 1-1/2" x 1/8"	1-1/2" x 1-1/2" x 1/8"	3 - 3/4"
UP TO 32'-0"	18"	1-1/2" x 1-1/2" x 1/8"	1-1/2" x 1-1/2" x 1/8"	1-1/2" x 1-1/2" x 1/8"	4 - 3/4"
UP TO 40'-0"	20"	2" x 2" x 3/16"	2" x 2" x 3/16"	2" x 2" x 3/16"	4 - 3/4"

TRUSS MATERIALS

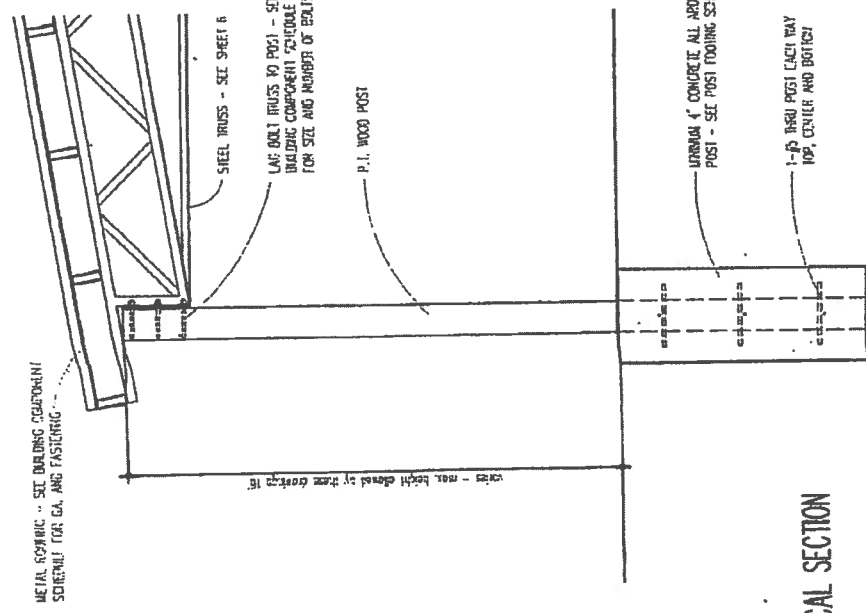
- STEEL ANGLES ASIM A36 KS
- BOLTS ASIM A307 FOR STEEL/STEEL
- ALL WELDS E70XX
- ASIM A307 FOR STEEL/TIMBER CONNECTIONS

NOTE: BOLT EACH END OF THE HORIZONTAL TIE TO THE TRUSS WITH THREE BOLTS FOR TRUSSES UP TO 20' SPANS AND FOUR THRU BOLTS FOR TRUSSES OVER 20' SPANS

SFF 3 4 6

800 bay = 1607 cu ft or 1152.58 cu yd.

SECTION AND DETAILS



hole mini-tinbar

-1452 -3072 -4800

Total height: 1607

POST FOOTING SCHEDULE			
FOOTING MARK	FOOTING DIAMETER	#S EACH WAY - TOP, MIDDLE AND BOTTOM	
F14	14"	7 #5	
F16	16"	10 #5	
F18	18"	13 #5	
F20	20"	17 #5	
F24	24"	21 #5	

48' damp

9408
12288
15552
19200
23648

46.656 cu in = 1 cu yd.

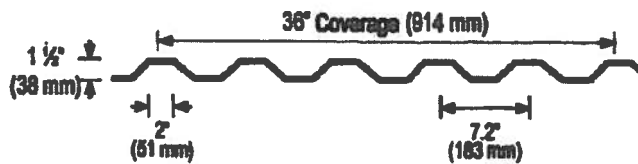
U.S.A. Block Time 3000 PSI
5 yds up NO delivery charge 10 in!
9 yds more

TYPICAL SECTION

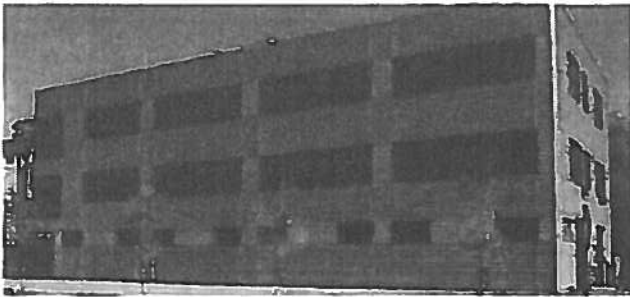
Berridge Deep-Deck

Prefinished corrugated 7.2" roof or wall panel for use on open framing or solid sheathing.

- Available in 24 & 22 gauge steel
- Wide, economical 36" coverage
- Vertical & horizontal applications
- Structural properties
- Purlin bearing leg standard
- Multi-use panel: roof, wall, or deck
- ASTM E-1592 tested
- ASTM E-1680 & E-1648 (air & water penetration)
- Florida Product Approval
- UL 90 rated panel
- UL 790 fire rating
- UL 2218 class 4



See www.berridge.com for Details and Specifications



24 GAUGE SECTION PROPERTIES						22 GAUGE SECTION PROPERTIES					
GAUGE	INCHES	WT (PSF)	PY (KSI)	WT (PSF)	PY (KSI)	GAUGE	INCHES	WT (PSF)	PY (KSI)	WT (PSF)	PY (KSI)
24	0.04	1.34	48	22	0.03	22	0.03	1.55	48		
TOP IN COMPRESSION			BOTTOM IN COMPRESSION			TOP IN COMPRESSION			BOTTOM IN COMPRESSION		
L	IN/10	U	IN/10	L	IN/10	L	IN/10	U	IN/10	L	IN/10
0.1073	0.1218	3.92	0.1073	0.1218	2.82	0.1411	0.1650	3.88	0.1411	0.1650	2.88

24 GAUGE DEEP DECK PANEL LOAD TABLE												
SPAN (FT)	NET VERTICAL LOAD + LIVE LOAD (PSF)						NET VERTICAL WIND UPLIFT (PSF)					
	1-SPAN		2-SPAN		3-SPAN		1-SPAN		2-SPAN		3-SPAN	
	STRONG	DEPL. LOAD	STRONG	DEPL. LOAD	STRONG	DEPL. LOAD	STRONG	DEPL. LOAD	STRONG	DEPL. LOAD	STRONG	DEPL. LOAD
4'	120	118	120	284	141	207	123	110	123	294	143	207
5'	77	68	77	135	60	100	78	58	78	135	62	100
6'	53	33	53	78	62	61	65	33	58	78	64	61
7'	38	20	38	49	45	38	41	20	41	49	48	38

22 GAUGE DEEP DECK PANEL LOAD TABLE												
SPAN (FT)	NET VERTICAL LOAD + LIVE LOAD (PSF)						NET VERTICAL WIND UPLIFT (PSF)					
	1-SPAN		2-SPAN		3-SPAN		1-SPAN		2-SPAN		3-SPAN	
	STRONG	DEPL. LOAD	STRONG	DEPL. LOAD	STRONG	DEPL. LOAD	STRONG	DEPL. LOAD	STRONG	DEPL. LOAD	STRONG	DEPL. LOAD
4'	163	145	163	348	181	273	187	145	187	348	188	273
5'	104	74	104	178	122	140	107	74	107	178	125	140
6'	72	43	72	103	84	81	76	43	76	103	87	81
7'	52	27	52	65	61	51	55	27	55	65	64	51

NOTES

1. The panel weight has been deducted from the allowable stress values.
2. The penetration properties have been calculated in accordance with the 2007 AISI Specification.
3. The properties and load tables are for the panel alone. The panel profile has been assured to remain constant under loading. The capacity of fasteners is not included.

Berridge Manufacturing Company
 6515 Fratt Road
 San Antonio, Texas 78216
 (800) 689-0009 • www.berridge.com

Printed in the USA. Jan 2014 - 1M

Exhibit B

BERRIDGE COLOR FINISHES



STANDARD COLORS

BUCKSKIN	PARCHMENT	ALMOND		
AGED BRONZE	SHASTA WHITE	FOREST GREEN	PATINA GREEN	SIERRA TAN
MEDIUM BRONZE	CHARCOAL GREY	HEMLOCK GREEN	BRISTOL BLUE	TERRA-COTTA
DARK BRONZE	ZINC GREY	HARTFORD GREEN	ROYAL BLUE	COLONIAL RED
COPPER BROWN	MATTE BLACK	TEAL GREEN	BURGUNDY	DEEP RED

PREMIUM COLORS*

These Berridge premium colors require a nominal surcharge.

NATURAL WHITE	AWARD BLUE

NATURAL METAL FINISH

Berridge Satin Finish Galvalume® is pretreated to remove mill oils, chemicals and residue and coated on the back side to inhibit corrosion. The top side receives a clear plastic stripable film.

SATIN FINISH GALVALUME®

METALLIC COLORS*

Berridge metallic colors are premium finishes which require a nominal surcharge. Due to variations in the printing process, please request actual color chips for accurate color viewing.

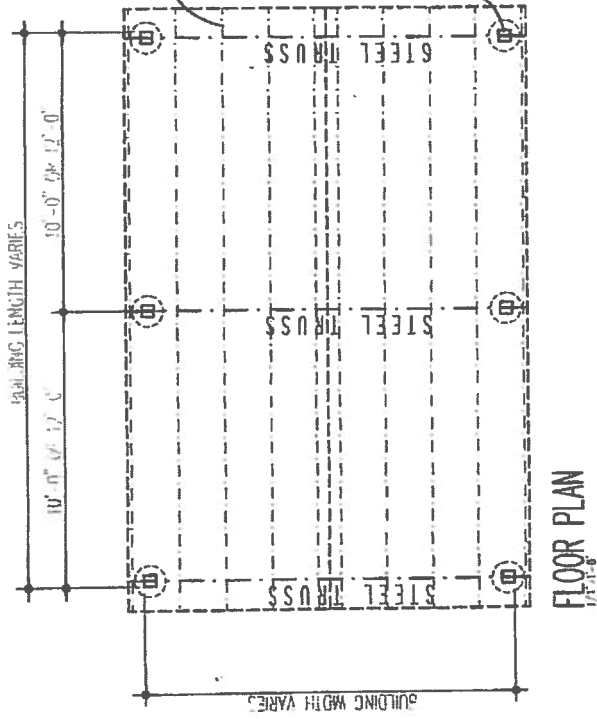
CHAMPAGNE	COPPER-COTE™	ANTIQUE COPPER-COTE
ZINC-COTE™	LEAD-COTE™	PREWEATHERED GALVALUME®



All colors except Award Blue comply with LEED® 2.2 & Energy Star requirements for roof slopes greater than 2:12. Almond complies with LEED® 2.2 requirements for low slopes. Natural White complies with LEED® 2.2 & Energy Star requirements for low slopes.

POLE BARN CONCEPT.

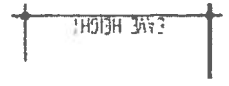
PLANS AND ELEVATIONS



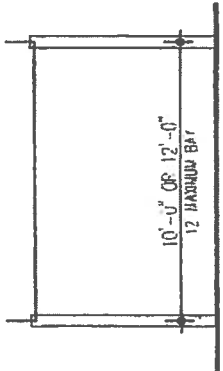
2 x 6 x 1 POST SURFERS - MAX. SPACING 7'-0" - SEE FABRICATION COMPONENT SCHEDULE

1" ANG BOLTS - 1" FT. COMPONENT SCHEDULE FOR SIZE AND NUMBER OF BOLTS

WOOD PC - 1" x 6 x 6 - MIN. EMBEDMENT 4'-0" - SEE FABRICATION COMPONENT SCHEDULE FOR DETAILS - INSTALLATION INSTRUCTIONS



END ELEVATION



SIDE ELEVATION

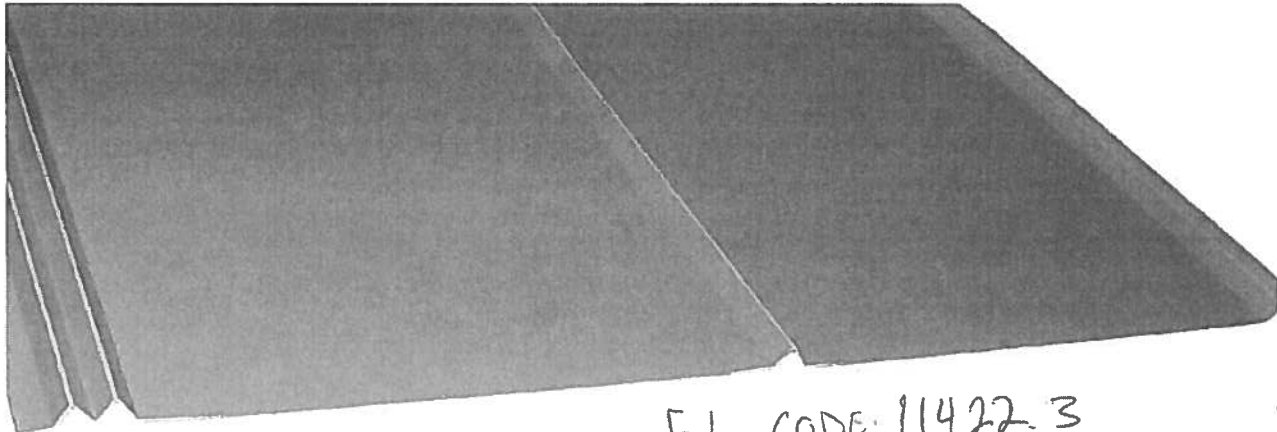
5V - ~~5V~~ COLOR PER SPECS.

BERRIDGE MANUFACTURING CO.

(800) 669-0009



PRODUCTS COLORS ROLL FORMERS TECHNICAL DOWNLOADS WARRANTIES CONTACT MORE



FL CODE: 11422-3

BERRIDGE DOUBLE RIB

INFO & DOWNLOADS

PRODUCT INFORMATION

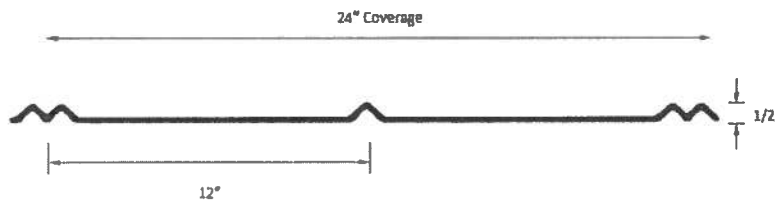
Berridge Double Rib metal roof panel offers a traditional, 5V crimp appearance. It is available for residential or light commercial applications over solid decking.

- 24-gauge steel
- Wide, economical 24" coverage
- Residential or utility
- Traditional appearance
- Florida Product Approval

MATERIALS

- Standard material is 24-Gauge, Galvalume®
- Unfinished material is Acrylic Coated Galvalume®

PANEL PROFILE



DOUBLE RIB

- Installation Details
- Product Data Sheet
- Specifications
- DWG Details
- BIM Objects

REQUEST A SAMPLE

GENERAL

- Color Selection
- Paint Specifications
- Finish Warranty Sample
- Chart of SRI Values
- Prefinished Galvalume Data Sheets
- Acrylic Coated Galvalume Data Sheet
- Custom Colors
- Finish & Substrate Warranties

TECHNICAL INFORMATION

- UL 90 Uplift Ratings
- UL 790 Fire Ratings
- UL 2218 Missile Impact Test
- Florida Product Approvals

ACCESSORIES



Rubber closures to help prevent air infiltration at ridges, eaves, headwalls, etc.



Use per installation details as closure at hips & valleys.



Use per installation details at panel endlaps, sidelaps, skylights, with foam closures, etc.

BERRIDGE MANUFACTURING CO.

Corporate & Sales Headquarters
6515 Fratt Road
San Antonio, Texas 78218
Find another branch

RESOURCES

- All Products
- Catalog
- Color Chart

COMPANY

- Contact
- About Us
- Berridge Total Program

SUBMIT PHOTOS OF OUTSTANDING BERRIDGE PROJECTS!

Do you have high resolution photos of outstanding applications of Berridge products? Send them to us and we'll submit them to industry publications

Accepted file types:

Installer Name